



2636 Nottingham Way

Mercerville, New Jersey

Building Size

- +/- 3,800 SF with Three Drive-Up Lanes

Lot Size

- +/- 1.35 Acres

Taxes

- +/- \$26,448 (2018)

Asking Price

- \$700,000

Traffic Count

- 21,216 VPD - Nottingham Way
- 10,065 VPD - E State Street

Zoning - CC - Community Commercial

- Mixed-Use Purposes
- Professional Offices
- Restaurants

Demographics

Radius	Population	Daytime Population	Median Household Income
1 Mile	11,314	10,680	\$71,759
3 Mile	89,941	89,467	\$72,267
5 Mile	231,652	266,130	\$64,909

For Sale - Contact

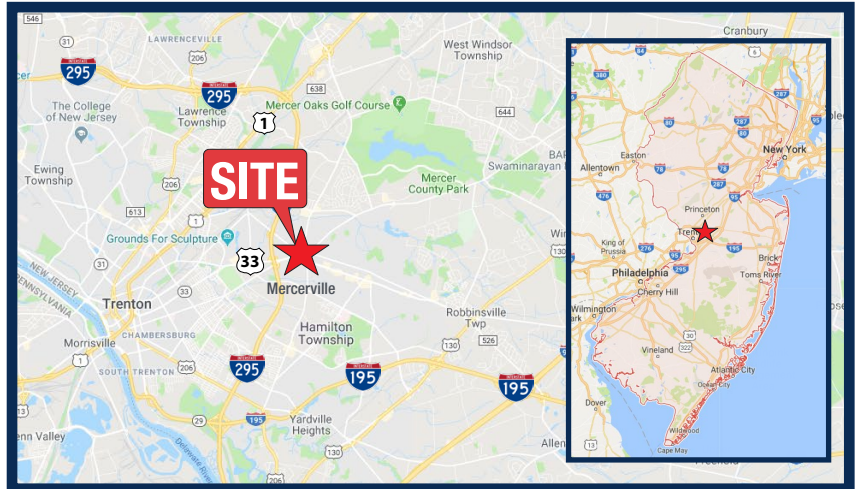
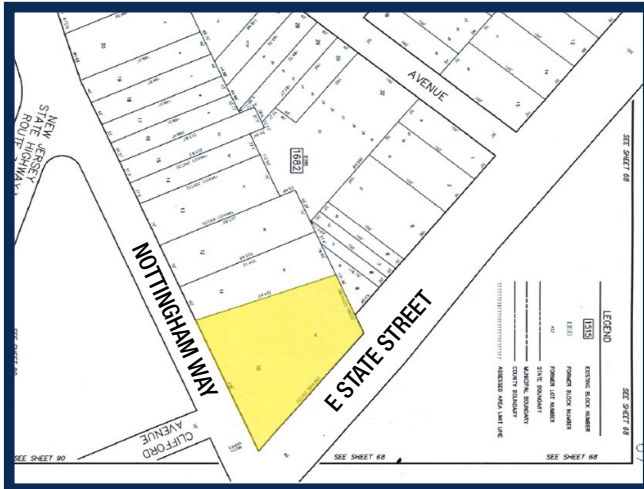
Jason Pierson
Ph. 732-707-6900 x1
jason@piersonre.com

PIERSON
COMMERCIAL REAL ESTATE®

2636 Nottingham Way

Mercerville, New Jersey

- Located at the heavily traversed traffic light-controlled intersection of State Street and Nottingham Way
- Existing bank building being delivered vacant
- Property will be deed restricted to any future banks/financial institutions
- Situated less than ½ mile from I-295
- +/- 35 on-site parking spaces



For Sale - Contact

Jason Pierson

Ph. 732-707-6900 x1

jason@piersonre.com

PIERSON
COMMERCIAL REAL ESTATE.®